



AMERICAN AUCTIONEERS GROUP

1146 N Central Avenue #535
Glendale, California 91202
Phone:
818-763-2021
Fax: 818-291-9495
WWW.AAGAUCTION.COM

PUBLIC AUCTION

Auction Date:

THURSDAY, MAY 26, 2022 @ 10:30 a.m. PST

AUCTION LOCATION:

6721 S. EASTERN AVE. LAS VEGAS, NV



ULTRA MODERN CUSTOM LIGHTING MFG FACILITY MFG OF ELEGANT CASINO LIGHTING AND FURNISHINGS

Preview : Wednesday May 25, from
8:00 a.m. to 3:00 p.m.
"On-line bidding thru bidspotter.com"



PRESORTED
First-Class Mail
U.S. Postage
PAID
STA CLARITA, CA
Permit No. 298

ULTRA MODERN CUSTOM LIGHTING MFG

PRECISION CNC
FAB & MACHINING FACILITY



2014 Accurpress 713010 130 Ton x 10' CNC Press
Brake w/ Accurpress ETS Controls, Pendant
Controller



Betenbender mdl. 12-1/4 12' Power Shear w/ PLC
Controls and Back Gauging **LOW HOURS**



New Dimension mdl. P6-250 6' x 1/4" Power Roll



Laguna "Swift 4X8" CNC Router w/ Laguna
DSP Control System, 4' x 8' Vacuum Table

MFG OF ELEGANT LIGHTING



Piranah P-50 50-Ton Iron Worker

Fabrication :

2014 Accurpress 713010 130 Ton x 10' CNC Press Brake s/n 11904 w/ Accurpress ETS Controls, Pendant Controller, 10' Bed Length, 10 1/2" Throat Depth.

Betenbender mdl. 12-1/4 12' Power Shear s/n 262919 w/ PLC Controls and Back Gauging, 53" Squaring Arm, Front Supports, 580 Metered Hours.

Omax "Fabricator" 6' x 12' CNC Weter Jet Contour Machine s/n G511535 w/ Omax CNC Controls, Meyer C35PE-BK Attenuator Pump, Thermal Solutions Dimplex Cooling Unit, Clemco Garnet Hopper, 7' x 13' Table Area.

Maxiem 2040 6' x 12' CNC Weter Jet Contour Machine s/n M20405055 w/ CNC Controls, Meyer C35PE-BK Attenuator Pump, Fluid Chillers Cooling Unit, Clemco Garnet Hopper, 7' x 13' Table Area.

Laguna "Swift 4X8" CNC Router s/n 018110745 w/ Laguna DSP Control System, Vacuum Table, Vacuum Pump.

Piranah P-50 50-Ton Iron Worker s/n P50-11229 w/ 50-Ton Punch 1 1/16" thru 1/2", 13/16" thru 3/4", Flat Bar Shear 3/4" x 10", 5/8" x 15", Angle Shear 5" x 5" x 3/8", Coping Notcher 2 3/4" x 4" x 1/4".

1012 Baileigh mdl. MH-19 Hammer Mill s/n 37898654 w/ Adjustable Stroke, Tooling.

2005 SAF Curvatrici DS60 Power Angle Roll s/n 0506-2915 w/ Roll Tooling.

Custom Power Angle Roll w/ Roll Tooling.

86" Power Roll w/ 6 1/2" Rolls, Rolling Base.

New Dimension mdl. P6-250 6' x 1/4" Power Roll s/n 03092061 w/ 7" Rolls.

Birmingham mdl. Xi-5018E 50" Power Roll s/n 1618164 w/ 3" Rolls.

24" Hand Roll w/ 2" Rolls, Stand.

Import 24" Hand Roll w/ 1 1/2" Rolls.

4-Ton 6 1/2" x 6 1/2" Hand Corner Notcher.

48" Finger Brake w/ Stand.

Central Machinery 36" Pan Brake w/ Stand.

Central Machinery 12-Ton Hydraulic H-Frame Press.

Pro Tools mdl. B-105-HD Universal Bender w/ Bending Dies.

Devine Brothers Type VCS-7 Polishing Mill w/ 7.5Hp Motor.

(2) Heavy Duty Polishing Mills (Buffers).

Skutt mdl. GM-1414 Glass Kiln s/n 000442.

Thermal Gas Fired Furnace.

SPO Pneumatic Sand Compactor.

General Machining :

Ganesh GT-1640S 16" x 40" Geared Head Gap Bed Lathe s/n S9704-016 w/ Newall DP900 Programmable DRO, 30-2000 RPM, Inch/mm Threading, Tailstock, Steady Rest, Tool Post, Coolant.

Ganesh Deluxe GMV-3 Vertical Mill s/n SV4000016 w/ Newall C80 3-Axis Programmable DRO, 3Hp Motor, 60-4200 Dial Change RPM, Power Draw-Bar, Chrome Box Ways, Power "X" and "Y" Frrds, 10" x 54" Table.

Jet Milling and Drilling Machine w/ 8 1/4" x 28 1/2" Table.

Hem Saw "Sidewinder A-4" 12" Automatic Horizontal Band Saw s/n 1275217 w/ Hem Saw Controls, Pneumatic Clamping and Feed, Coolant, Conveyors.

Scotchman CPO350LT Miter Cold Saw s/n 41511197 w/ 2-Speeds, Speed Clamping, Side Work Supports.

DoAll mdl. 2013-V3 20" Vertical Band Saw s/n 721-17106 w/ Dial Speed Change, 26" x 26" Table.

Kama EV-996 Miter Horizontal Band Saw w/ Side Work Supports.

Gryphon 5 1/2" Diamond Vertical Band Saw.

2010 Kaeser BSD40 40Hp Rotary Air Compressor s/n 1164 w/ 193 CFM @ 125 PSIG.

2010 Kaeser TD51 Refrigerated Air Dryer s/n 1336.

240 Gallon Vertical Air Storage Tank.

Maxus 5Hp Vertical Air Compressor w/ 80 Gallon Tank.

Speedaire and Ridgid Portable Air Compressors.

MBA Media Blast & Abrasives mdl. N-200 6060 Dry Blast Cabinet s/n 47621107 w/ Dust Collector.

Burr King mdl. 760 2" Pedestal Belt Sander.

Simon Jewelers Buffer w/ Built-In Dust Cabinet.

Baldor Pedestal Buffer.

Fast-Tap mdl. 400 Straight Arm Pneumatic Tapper w/ 4' x 4' Steel Table.

Central Machinery 16-Speed Pedestal Drill Press.

(2) Skil Bench Model Drill Presses.

Swif-Mul mdl. ML-125 Sand Blasting Pot.

Arbor Press.



1012 Baileigh MH-19 Hammer Mill



DoAll mdl. 2013-V3 20" Vertical Band Saw



Ganesh GT-1640S 16" x 40" Geared Head Gap Bed Lathe s/n S9704-016 w/ Newall DP900 Programmable DRO, 30-2000 RPM, Inch/mm Threading



Ganesh Deluxe GMV-3 Vertical Mill s/n SV4000016 w/ Newall C80 3-Axis Programmable DRO, 3Hp Motor, 60-4200 Dial Change RPM, Power Draw-Bar

PRECISION WATERJET CUTTING AND FABRICATION



Omax "Fabricator" 6' x 12' CNC Water Jet Contour Machine w/ Omax CNC Controls



Maxiem 2040 6' x 12' CNC Water Jet Contour Machine w/ CNC Controls, Meyer C35PE-BK Attenuator Pump



2010 Kaeser BSD40 40Hp Rotary Air Compressor



Hem Saw "Sidewinder A-4" 12' Automatic Horizontal Band Saw



86" Power Roll w/ Rolling Base

METAL CASTING & FINISHING DEPARTMENT



2011 Sprayline mdl. SL-SDD26 13' x 24' Paint Booth w/ Unitronics PLC Controls, Filtration and Lighting



24' x 24' Paint Booth w/ Filtration System and Lighting



Thermal Gas Fired Furnace



SPO Pneumatic Sand Compactor



Sand Casting Mold Frames



MBA Media Blast & Abrasives mdl. N-200 6060 Dry Blast Cabinet

CUSTOM LIGHTS & DECORATIVE FURNISHINGS



Chandeliers



High End Lantern and Wall Sconces



Chandeliers



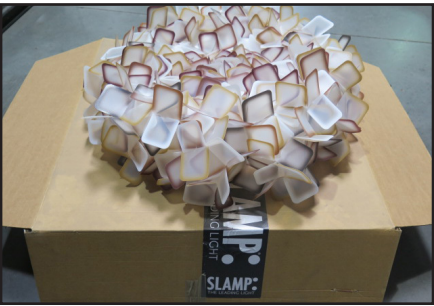
Chandeliers



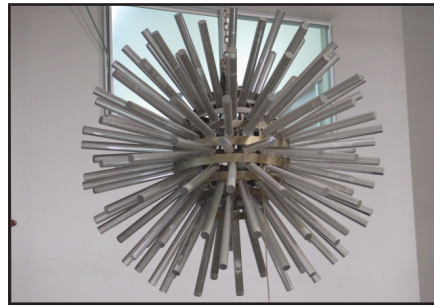
Decorative Furnishings



Unfinished Furnishings



Slamp Hanging Chandelier
40 AVAILABLE



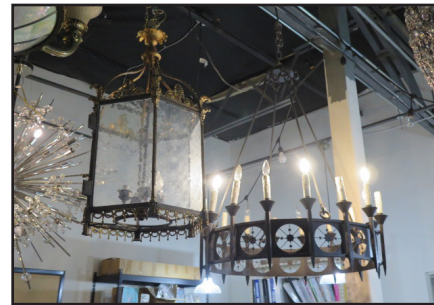
Chandeliers



Decorative Outdoor Lanterns



Chandeliers



Lantern and Pendant Chandeliers



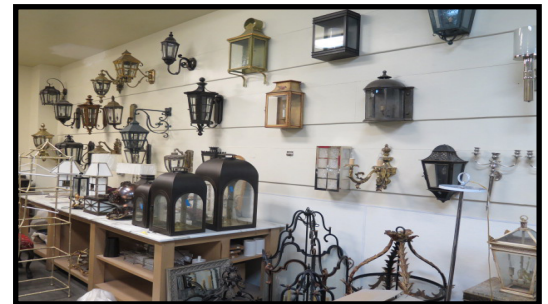
Decorative Screens



Pendant Hanging Lighting



Decorative Trash Receptacles



LARGE QUANTITY OF MATERIAL STOCK



Partial View of Available Brass, Stainless, Aluminum and Steel Sheet Stock



Aluminum, Stainless and Steel Bar and Tube Stock



Ornamental Brass and Bronze Pieces



Large Quantity of Brass Bar and Tube Stock

Material and Handling :

2011 Ford F-550 Super Duty 16' Stake-Bed Truck Lisc# 600-XSR w/ 6.8L Gas Engine, Automatic Trans, VIN# 1FDUF5GY7BED09958.

Mitsubishi FGC25K 1800 Lb Cap LPG Forklift s/n AF82C04734 w/ 3-Stage Mast 240" Lift Height, Side Shift, Solid Tires.

(4) Cantilever Sheet Stock Racks.

Large Quantities of Brass, Coller, Stainless and Steel Sheet, Bar and Tube Stock.

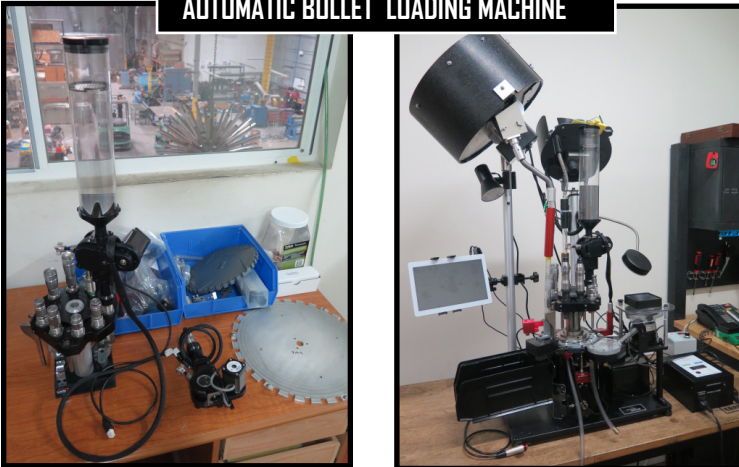
Mark 7 Reloading "Revolution" Automatic Loading Press System s/n 1C1436 w/ Microprocessor Controls and Monitoring, 3500 Rounds per Hour Max, Multiple Calibers and Die Packs, Accessories.



2011 Ford F-550 Super Duty 16' Stake-Bed Truck w/ 6.8L Gas Engine

SUPPORT EQUIPMENT

AUTOMATIC BULLET LOADING MACHINE



Mark 7 Reloading "Revolution" Automatic Loading Press w/ Micro-processor Controls and Monitoring, 3500 Rounds per Hour Max



Partial View of Tooling



2005 SAF Curvatrici DS60 Power Angle Roll



Fabrication Support Machinery

General Machining :

Ganesh GT-1640S 16" x 40" Geared Head Gap Bed Lathe s/n S9704-016 w/ Newall DP900 Programmable DRO, 30-2000 RPM, Inch/mm Threading, Tailstock, Steady Rest, Tool Post, Coolant.
 Ganesh Deluxe GMV-3 Vertical Mill s/n SV4000016 w/ Newall C80 3-Axis Programmable DRO, 3Hp Motor, 60-4200 Dial Change RPM, Power Draw-Bar, Chrome Box Ways, Power "X" and "Y" Frrds, 10" x 54" Table.
 Jet Milling and Drilling Machine w/ 8 1/4" x 28 1/2" Table.
 Hem Saw "Sidewinder A-4" 12" Automatic Horizontal Band Saw s/n 1275217 w/ Hem Saw Controls, Pneumatic Clamping and Feed, Coolant, Conveyors.
 Scotchman CPO350LT Miter Cold Saw s/n 41511197 w/ 2-Speeds, Speed Clamping, Side Work Supports.
 DoAll mdl. 2013-V3 20" Vertical Band Saw s/n 721-17106 w/ Dial Speed Change, 26" x 26" Table.
 Kama EV-996 Miter Horizontal Band Saw w/ Side Work Supports.
 Gryphon 5 1/2" Diamond Vertical Band Saw.
 2010 Kaeser BSD40 40Hp Rotary Air Compressor s/n 1164 w/ 193 CFM @ 125 PSIG.
 2010 Kaeser TD51 Refrigerated Air Dryer s/n 1336.
 240 Gallon Vertical Air Storage Tank.
 Maxus 5Hp Vertical Air Compressor w/ 80 Gallon Tank.
 Speedaire and Ridgid Portable Air Compressors.
 MBA Media Blast & Abrasives mdl. N-200 6060 Dry Blast Cabinet s/n 47621107 w/ Dust Collector.
 Burr King mdl. 760 2" Pedestal Belt Sander.
 Simon Jewelers Buffer w/ Built-In Dust Cabinet.
 Baldor Pedestal Buffer.
 Fast-Tap mdl. 400 Straight Arm Pneumatic Tapper w/ 4' x 4' Steel Table.
 Central Machinery 16-Speed Pedestal Drill Press.
 (2) Skil Bench Model Drill Presses.
 Swif-Mul mdl. ML-125 Sand Blasting Pot.
 Arbor Press.

Misc Support :

2011 Sprayline mdl. SL-SDD26 13' x 24' Paint Booth s/n 2746 w/ Unitronics PLC Controls, Filtration System, Lighting.
 24' x 24' Paint Booth w/ Double Doors, Filtration System, Lighting.
 HP "DesignJet Z2100 Photo" Wide Format Color Printer.
 HP DesignJet 300 Color Plotter.
 Large Quantities of Lighting Hardware and Electrical.
 Executive Office Furniture and Reception Furniture.
 24" x 36" x 4", 12" x 18" x 3" and 8" x 8" x 2" Granite Surface Plates.

PUBLIC AUCTION



Miller Welders



Lincoln Precision TIG 375 AC/DC Arc Welders



Lincoln Ranger 305G Gas Powered Welding Generator



Custom Power Angle Roll w/ Roll Tooling



Mitsubishi FGC25K 5000 Lb Cap LPG Forklift



ALL MACHINERY MOVERS MUST BE APPROVED BY THE SELLER PRIOR TO REMOVAL OF EQUIPMENT



BID ON BIDSPOTTER.COM

TERMS OF SALE: CASH OR CASHIERS CHECK ONLY. 18% BUYERS PREMIUM ON ALL PURCHASES \$200.00 REFUNDABLE CASH DEPOSIT. 25% CASH DEPOSIT TOWARDS ALL PURCHASES. ALL SALES ARE SUBJECT TO CALIFORNIA SALES TAX. THERE WILL BE NO EXCEPTIONS.

BID LIVE OR VIA WEBCAST



TERMS AND CONDITIONS
ALL ITEMS ARE SOLD AS-IS / WHERE - IS
NO GUARANTEES, OR WARRANTIES ARE APPLIED
ALL ITEMS MUST BE PICKED UP BY
SPECIFIED DATE



PARTIAL & ABBREVIATED TERMS AND CONDITIONS OF AUCTION

ALL TERMS AND CONDITIONS BEHIND THE BIDDERS CARD SUPPLIED WILL APPLY TO ALL AUCTION SALE ITEMS AND FOR ALL PRIVATE NEGOTIATIONS. BY PARTICIPATING AND BIDDING AT AUCTION YOU ARE LEGALLY BINDING A CONTRACT WITH THE AUCTION COMPANY.

ALL INVOICES MUST BE PAID WITHIN 24 HOURS FROM AUCTION DATE. IT IS PROHIBITED TO BID ON ANY ITEM THAT CANNOT BE PAID IN FULL WITHIN 24 HOURS FROM AUCTION DATE. PAYMENTS MUST BE CASHIERS CHECK, WIRE TRANSFER, OR LETTER OF GUARANTEE FROM BANK.
ALL ITEMS MUST BE REMOVED BY JUNE 3, 2022 3:00 PM (PST)
NO LOADING OR PICK UP ON SATURDAY AND SUNDAY.
NO LOADING BY AUCTIONEER OR SELLER.

BUYERS PREMIUM 18% FOR ALL ONLINE BIDDING ON BIDSPOTTER.COM.
AUCTIONEER IS NOT RESPONSIBLE FOR MIS IDENTIFICATION OF ANY EQUIPMENT OR ASSETS BEING SOLD AT AUCTION EITHER BY VERBAL OR WRITTEN. IT IS THE BUYER'S RESPONSIBILITY TO INSPECT THE GOODS AND ASCERTAIN IF THE SPECIFICATIONS, DESCRIPTIONS AND CONDITION OF THE GOODS CONFORM TO THE BUYER'S REQUIREMENT INCLUDING SERIAL NUMBERS.

BUYER ACKNOWLEDGES THAT THE EQUIPMENT OR ITEMS PURCHASED ONCE MAY HAVE CONTAINED, EXPOSED TO, AND OR UTILIZED HAZARDOUS MATERIAL. THERE MAY BE SURFACES ON ITEMS WHERE DECONTAMINATION CANNOT BE VALIDATED: AS SUCH, THE BUYER OR BIDDER ACKNOWLEDGING THAT THEY ARE ACCEPTING THIS EQUIPMENT OR ITEMS IN AN "AS IS" CONDITION.

BUYER AND THEIR ASSOCIATES WILL HOLD AUCTIONEER AND "THE SELLER" HARMLESS AGAINST ANY AND ALL CLAIMS AND ACTIONS ARISING OUT OF THE PARTICIPATION OF THE INDEMNITEE IN THE ACTIVITY, INCLUDING, WITHOUT LIMITATION, EXPENSES, JUDGEMENTS, FINES, SETTLEMENTS AND OTHER AMOUNTS INCURRED IN CONNECTION WITH ANY LIABILITY, SUIT, ACTION, LOSS, OR DAMAGE ARISING OR RESULTING FROM THE INDEMNITEE'S PARTICIPATION IN THE AUCTION. ALL BIDDERS MUST ONLY USE APPROVED MACHINERY MOVERS BY SELLER WITH LIABILITY INSURANCE OF \$2,000,000 OR HIGHER. NO ITEMS SHALL BE REMOVED UNLESS PAID IN FULL AND ALL ITEMS SHALL BE REMOVED IN THE TIME ALLOCATED BY THE AUCTIONEER.

ALL SALES ARE FINAL, AND ALL ITEMS ARE SOLD AS IS WHERE IS, WITH ALL FAULTS AND DEFECTS.

THERE ARE NO GUARANTEE OR WARRANTY TO ANY ITEMS SOLD (RE: MAKE, MODEL, YEAR, HOURS, MILES, OR MERCHANTABILITY BY AUCTIONEER OR SELLER).
BUYERS RESPONSIBILITY TO INSURE PROPER USE FOR SAFETY.

ALL ITEMS ARE SOLD AS "PARTS ONLY"
BUYER ACKNOWLEDGES THAT THE GOODS ARE PRE-OWNED AND GOODS WERE NEITHER DESIGNED NOR MANUFACTURED BY SELLER. SELLER HAS NO KNOWLEDGE OF OR CONTROL OVER THE PRIOR USE OR MISUSE OF THE GOODS OR ANY MODIFICATIONS TO THE GOODS FOLLOWING ORIGINAL MANUFACTURE. NEITHER DOES SELLER HAVE KNOWLEDGE OR CONTROL OVER THE APPLICATION OF THE GOODS BY BUYER. IT IS THE BUYER'S SOLE RESPONSIBILITY TO PROVIDE PROPER SAFETY DEVICES, EQUIPMENT AND INSTRUCTIONS FOR ANY PARTICULAR USE OR TAKE NECESSARY STEPS TO CONFORM THE GOODS AND OPERATION THEREOF TO ALL FEDERAL, STATE OR LOCAL GOVERNMENT SAFETY STANDARDS AND LAWS INCLUDING WITHOUT LIMITATION THE OCCUPATIONAL SAFETY AND HEALTH ACT OF "OSHA". ANNOUNCEMENTS MADE BY THE AUCTIONEER ON THE DAY OF THE AUCTION TAKE PRECEDENCE OVER ANY PREVIOUS PRINTED MATERIAL PERTAINING TO THIS AUCTION. AUCTIONEER RESERVES THE RIGHT TO REMOVE OR ADD TO ANY AUCTION ITEMS ON THE LIST UNTIL AUCTION TIME.

LIVE WEBCAST ONLINE ONLY "NO ONSITE BIDDING"

MAY 26, 2022 @ 10:30 a.m.